



SALE PRICE: \$185,000

Property Highlights

- Price Per Acre: \$59,870
- Acres: 3.09
- Frontage: 540'
- Depth: 238'
- Utilities: Gas, Sewer, Water, Electric, Internet, and Survey available
- Zoning: C3
- Traffic Count: 9,310

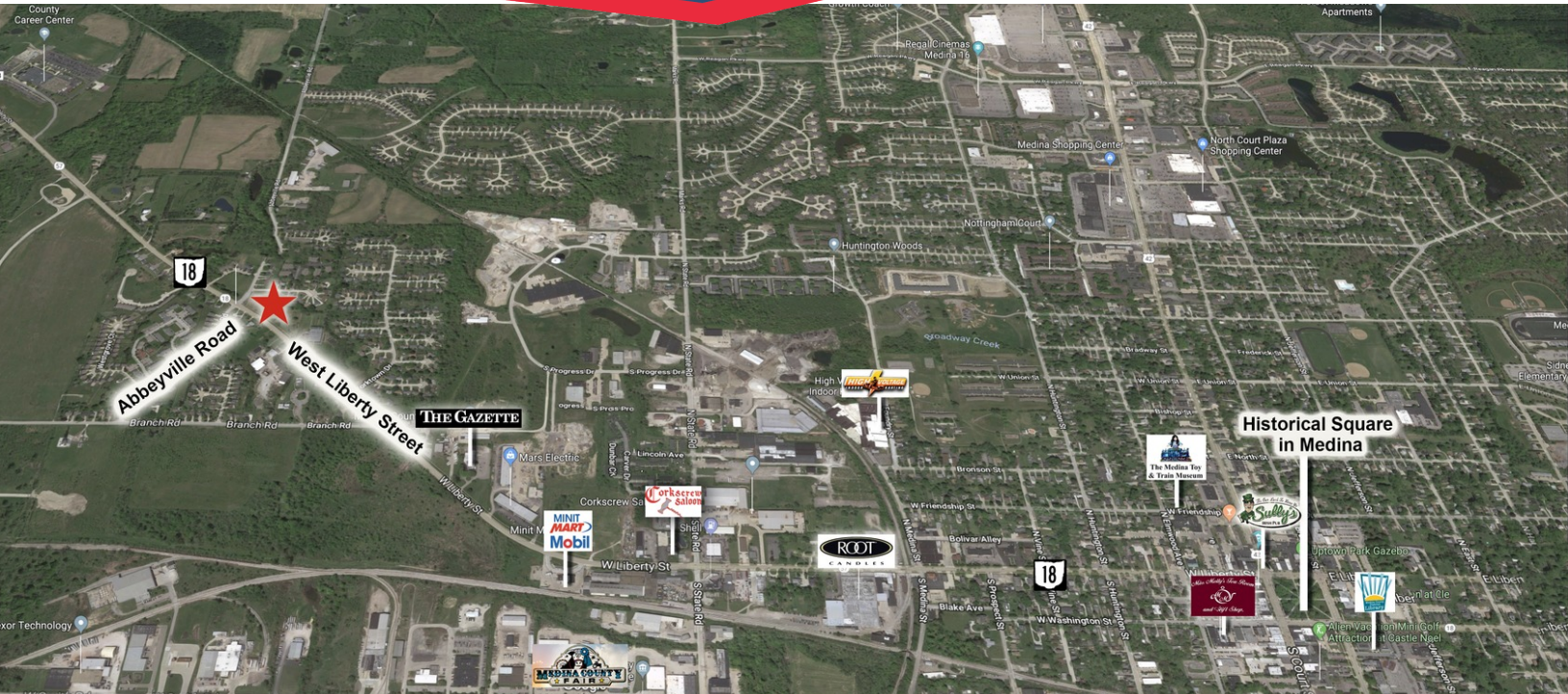


LISTING AGENT

SAM TECCA
Sam@GerspacherGroup.com

330.722.5002

GERSPACHER REAL ESTATE GROUP
5164 Normandy Park Drive, Suite 285
Medina, OH 44256



PROPERTY OVERVIEW

Abbeyville Road in Medina, Ohio is 3.09 acres of land for sale. The frontage is 540 feet and the depth is 238 feet. The zoning is C-3. Gas, sewer, water, electric, internet and survey are available. This property would be perfect for Commercial Recreation, Convenience Retail, Drive-in Restaurants, Offices, Retail, Gas Station, Multi-Family Dwelling, or a Car Wash.

LOCATION OVERVIEW

West of Medina on West Liberty (Route 18) and Abbeyville Road

DEMOGRAPHICS

	1 MILE	5 MILES	10 MILES
Total Households	1,358	21,449	58,701
Total Population	3,278	55,815	156,038
Average HH Income	\$56,311	\$77,747	\$79,814

The information contained herein is from sources deemed reliable but no warranty or representation is made to the accuracy thereof.